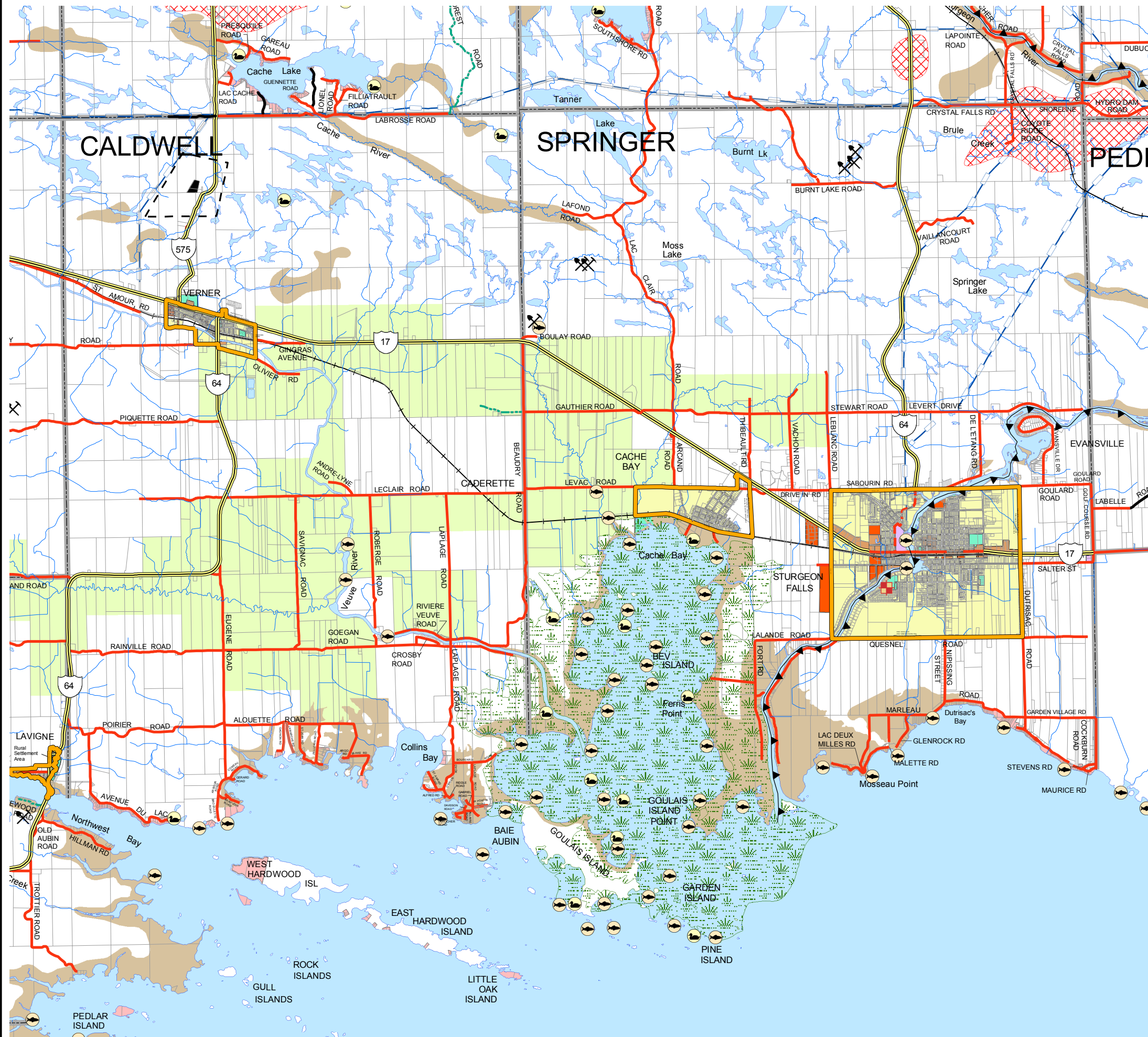


# Municipality of / de West Nipissing Ouest Official Plan / Plan Officiel Land Use Plan / Plan d'Aménagement

Latest Revision : January 5, 2011



Legend	
- Municipal Boundary	
- Rural Settlement Area Boundary	
- Urban Settlement Area Boundary	
- Urban Services Limit	
Land Use Districts	
- Residential	
- Commercial	
- Employment	
- Waterfront	
- Rural	
- Major Open Space	
Infrastructure	
- Waste Management Area	
- Waste Management Area (Closed)	
- 500 m Influence Area	
- Sewage Disposal Treatment Services	
- AMIS Sites	
Resource Management	
- Agricultural Resource Lands	
- Extractive Resource Lands	
- Areas of Mineral Potential	
- Hazard Lands	
Natural Heritage Features and Areas	
- Provincially Significant Wetland	
- Locally Significant Wetland	
- Resource Management Lands/Provincial Parks	
- Deer Yard	
- Moose Feeding Area	
- Fish Spawning Area	
- Nesting Site	
Transportation	
- Provincial Highway	
- Local Road	
- Private Road	
- Resource Road	
- Rail Line	
- Special Purpose Trail	
- Snowmobile/ATV Trail	
- Canoe Routes	
- Natural Gas Pipeline	
- Utility Line	
NOTE: All lands within 30m of the edge of any shoreline or watercourse and all lands along the shoreline of Lake Nipissing below a minimum elevation of 197.25m are considered as being within the Hazard Lands (excluding wave uprush) unless otherwise indicated. Plan is not applicable to the lakebed of Lake Nipissing.	



PAUL H. TORRANCE SURVEYING LTD.  
GEOMATICS SERVICES



TCL Tunnock Consulting Ltd.