

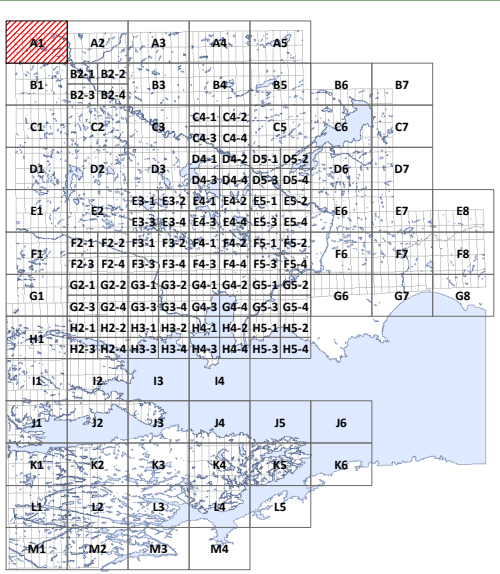
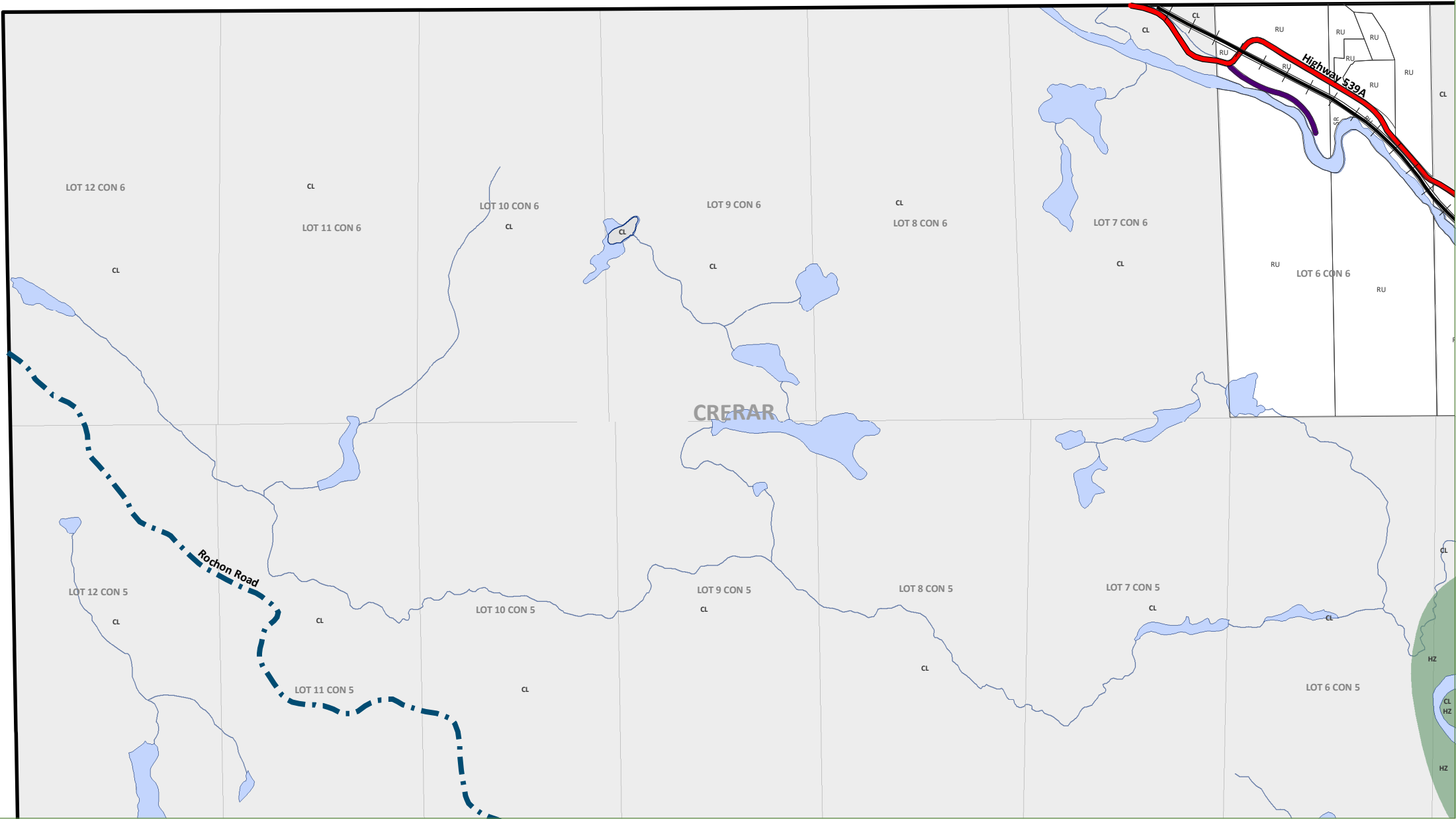


WEST NIPISSING OUEST
ZONING BY-LAW 2014-45

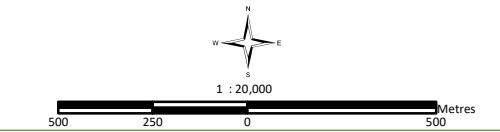
CONSOLIDATION
JUNE 1, 2018

Schedule A1

CRERAR



A1	Agriculture One	RU	Rural
A2	Agriculture Two		
R1	Residential One	R2	Residential Two
R3	Residential Three	R4	Residential Four
SR	Shoreline Residential		
RR	Rural Residential		
MHR	Mobile Home Residential		
C1	General Commercial	C2	Highway Commercial
C3	Tourist Commercial		
M1	Light Industrial	M2	Heavy Industrial
M3	Extractive Industrial		Waste Disposal Industrial
CL	Crown Land	OS	Open Space
CF	Community Facility		
PSW	Provincially Significant Wetland		
HZ	Hazard Lands		
	Waste Management Influence Area		
	Settlement Areas		
	Former Municipal Boundaries		
	Highways		Private Roads
	Township Roads		Resource Roads
	Pipeline		Rail Lines



This map is for illustration purposes only. The information displayed on this map has been created from Ministry of Natural Resources, Ontario Base Mapping & MPAC Property Fabrics. While every effort has been made to accurately depict the information, this map should not be relied on as a precise indicator of locations of features or roads.

Base Mapping Source:
Ministry of Natural Resources - Ontario Base Mapping
MPAC - Municipal Property Assessment Corporation

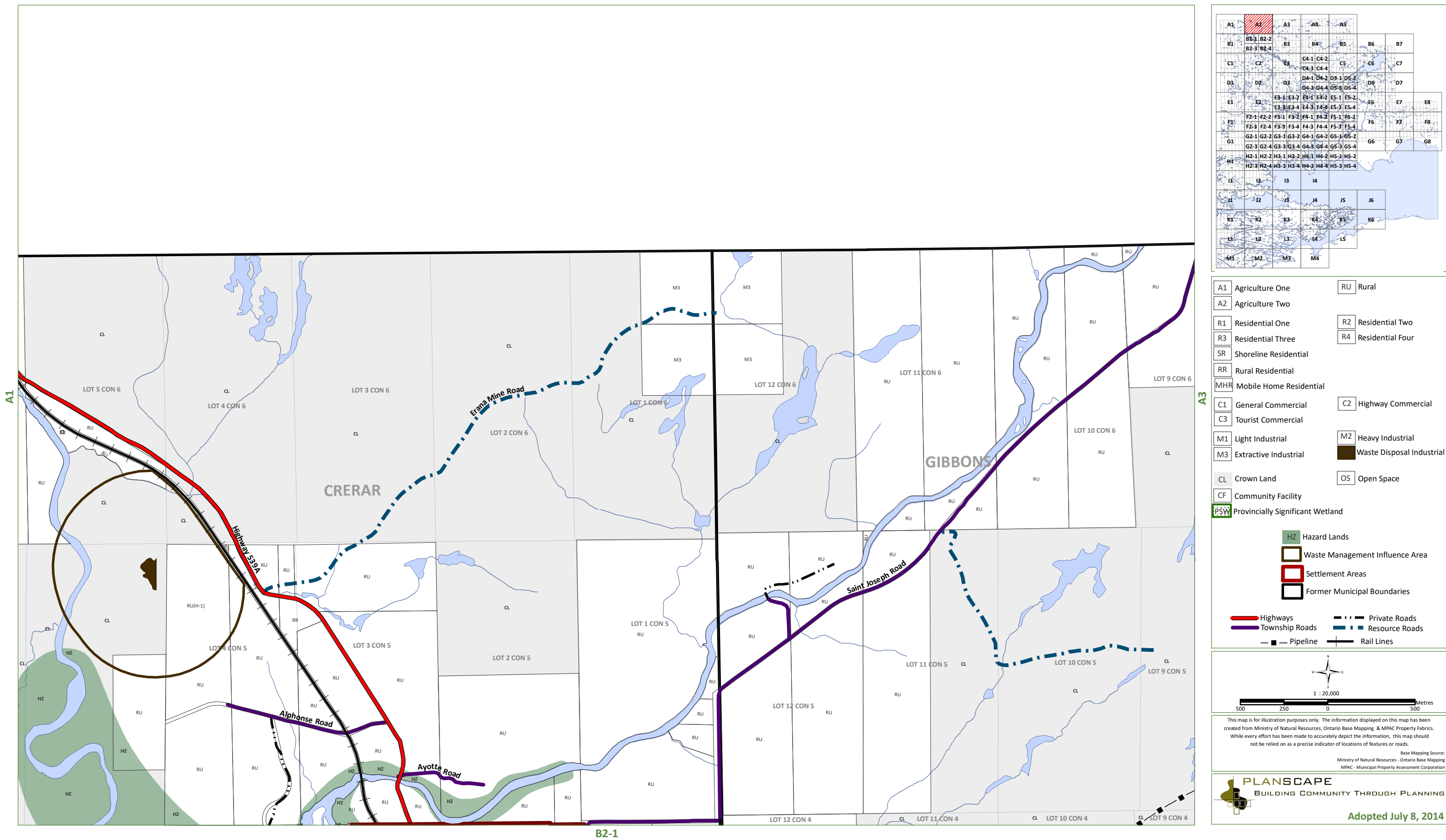


CONSOLIDATION

JUNE 1, 2018

Schedule A2

CRERAR/GIBBONS

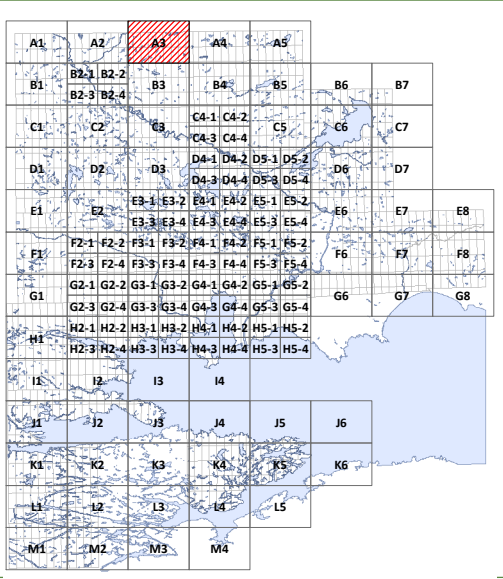
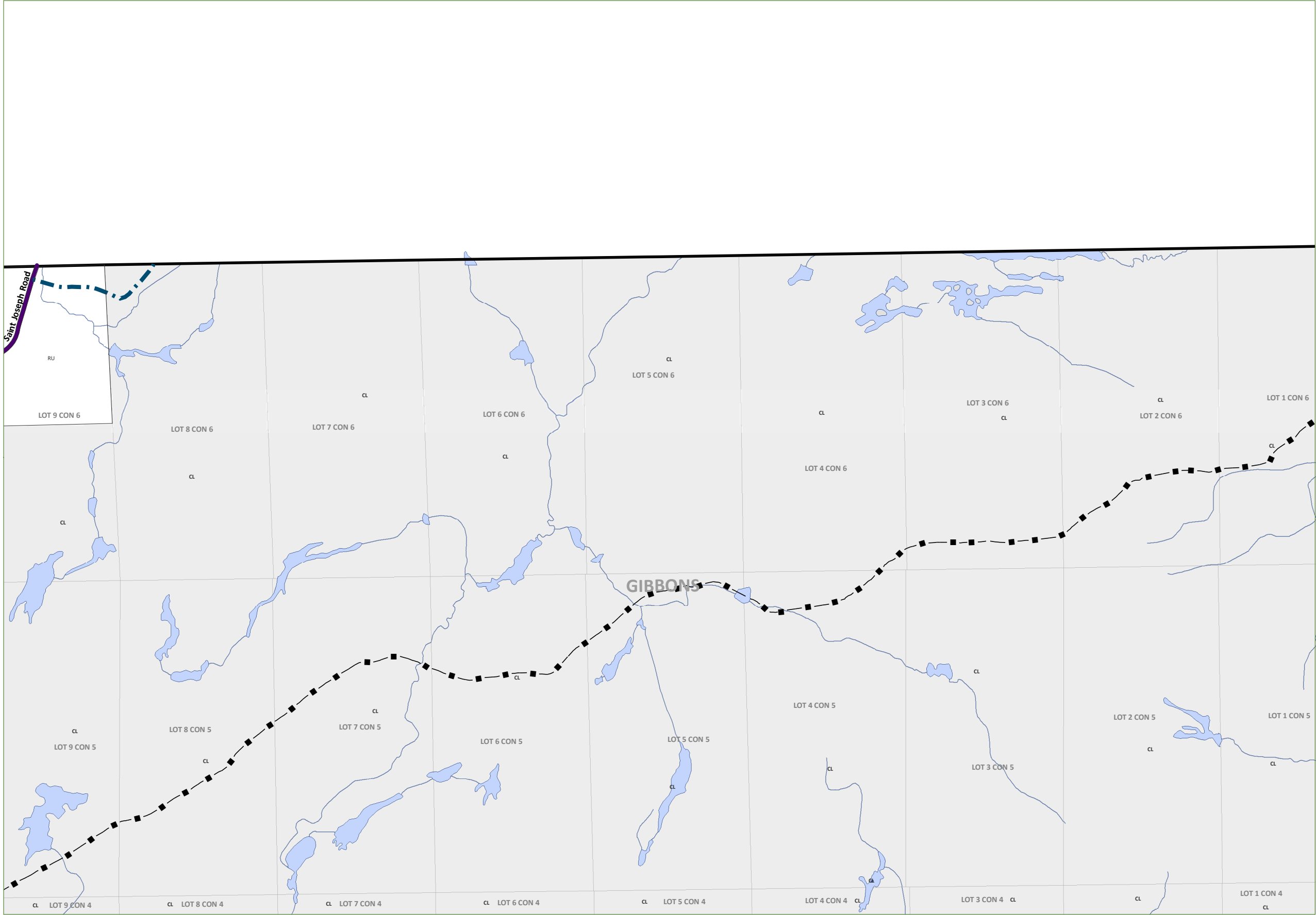




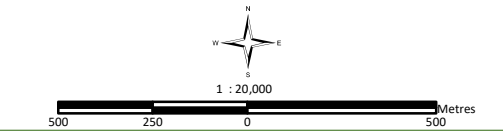
WEST NIPISSING OUEST
ZONING BY-LAW 2014-45

CONSOLIDATION
JUNE 1, 2018

Schedule A3
GIBBONS



A1	Agriculture One	RU	Rural
A2	Agriculture Two		
R1	Residential One	R2	Residential Two
R3	Residential Three	R4	Residential Four
SR	Shoreline Residential		
RR	Rural Residential		
MHR	Mobile Home Residential		
C1	General Commercial	C2	Highway Commercial
C3	Tourist Commercial		
M1	Light Industrial	M2	Heavy Industrial
M3	Extractive Industrial		Waste Disposal Industrial
CL	Crown Land	OS	Open Space
CF	Community Facility		
PSW	Provincially Significant Wetland		
HZ	Hazard Lands		
	Waste Management Influence Area		
	Settlement Areas		
	Former Municipal Boundaries		
	Highways		Private Roads
	Township Roads		Resource Roads
	Pipeline		Rail Lines



This map is for illustration purposes only. The information displayed on this map has been created from Ministry of Natural Resources, Ontario Base Mapping & MPAC Property Fabrics. While every effort has been made to accurately depict the information, this map should not be relied on as a precise indicator of locations of features or roads.

Base Mapping Source:
Ministry of Natural Resources - Ontario Base Mapping
MPAC - Municipal Property Assessment Corporation

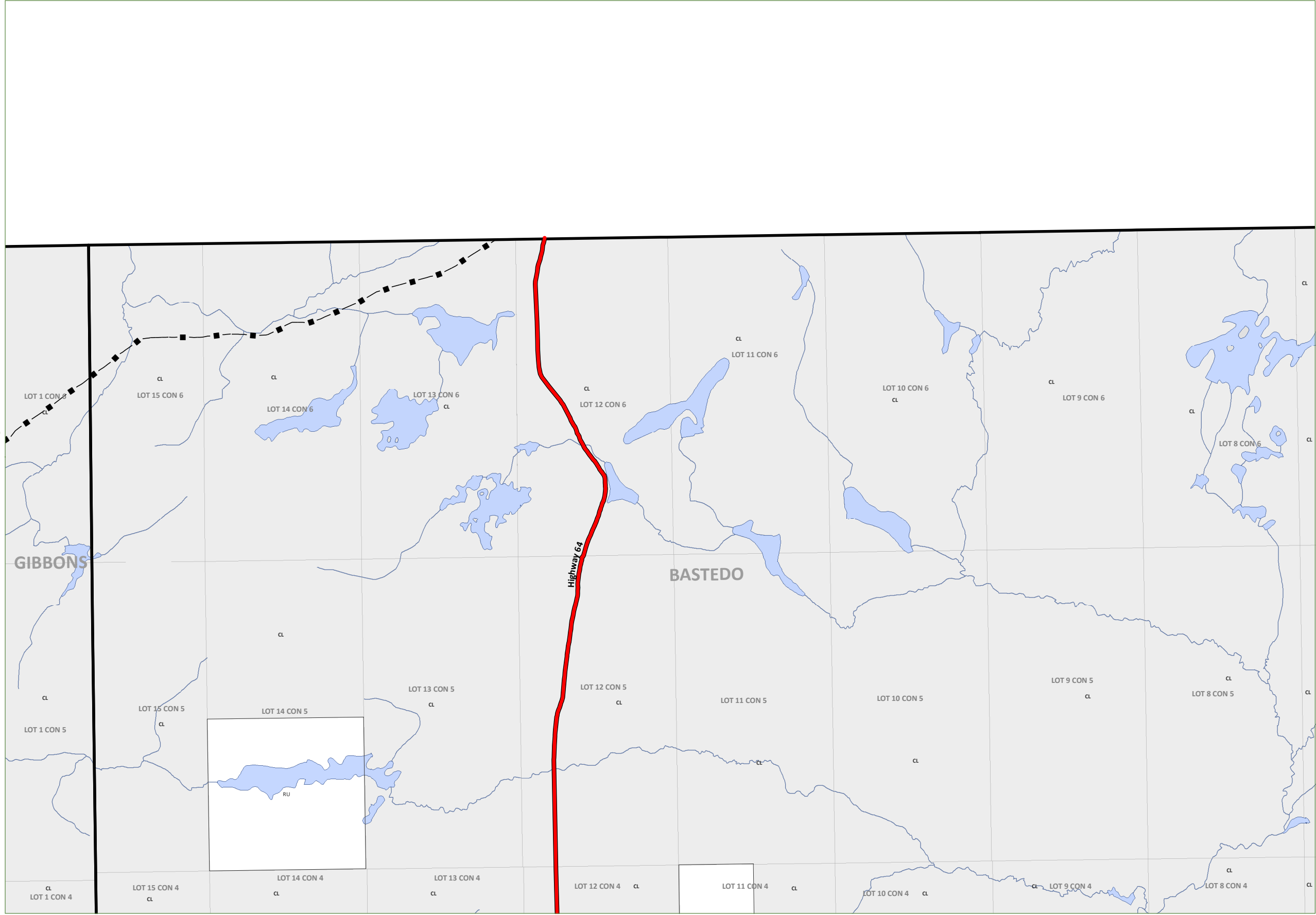


CONSOLIDATION

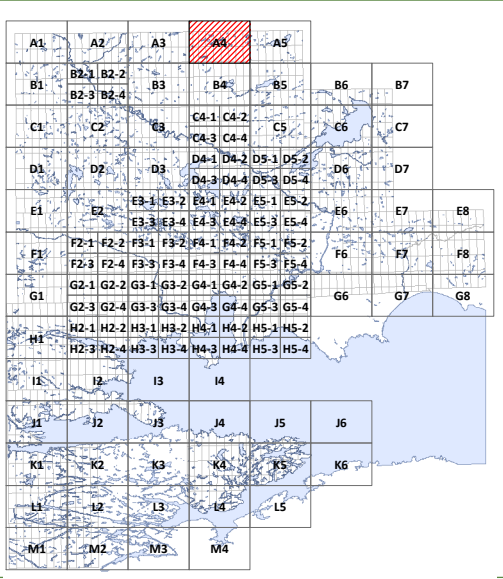
JUNE 1, 2018

Schedule A4

GIBBONS/BASTEDO

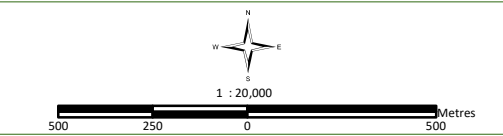


B4



A1	Agriculture One	RU	Rural
A2	Agriculture Two		
R1	Residential One	R2	Residential Two
R3	Residential Three	R4	Residential Four
SR	Shoreline Residential		
RR	Rural Residential		
MHR	Mobile Home Residential		
C1	General Commercial	C2	Highway Commercial
C3	Tourist Commercial		
M1	Light Industrial	M2	Heavy Industrial
M3	Extractive Industrial		Waste Disposal Industrial
CL	Crown Land	OS	Open Space
CF	Community Facility		
PSW	Provincially Significant Wetland		

 Hazard Lands
 Waste Management Influence Area
 Settlement Areas
 Former Municipal Boundaries



This map is for illustration purposes only. The information displayed on this map has been created from Ministry of Natural Resources, Ontario Base Mapping & MPAC Property Fabrics. While every effort has been made to accurately depict the information, this map should not be relied on as a precise indicator of locations of features or roads.

Base Mapping Source:
Ministry of Natural Resources - Ontario Base Mapping
MPAC - Municipal Property Assessment Corporation



Adopted July 8, 2014

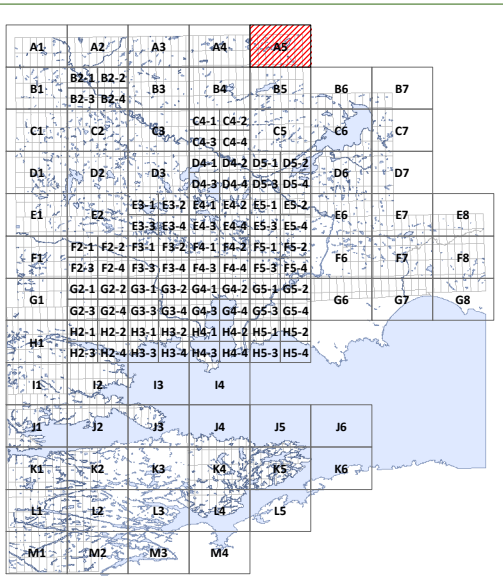
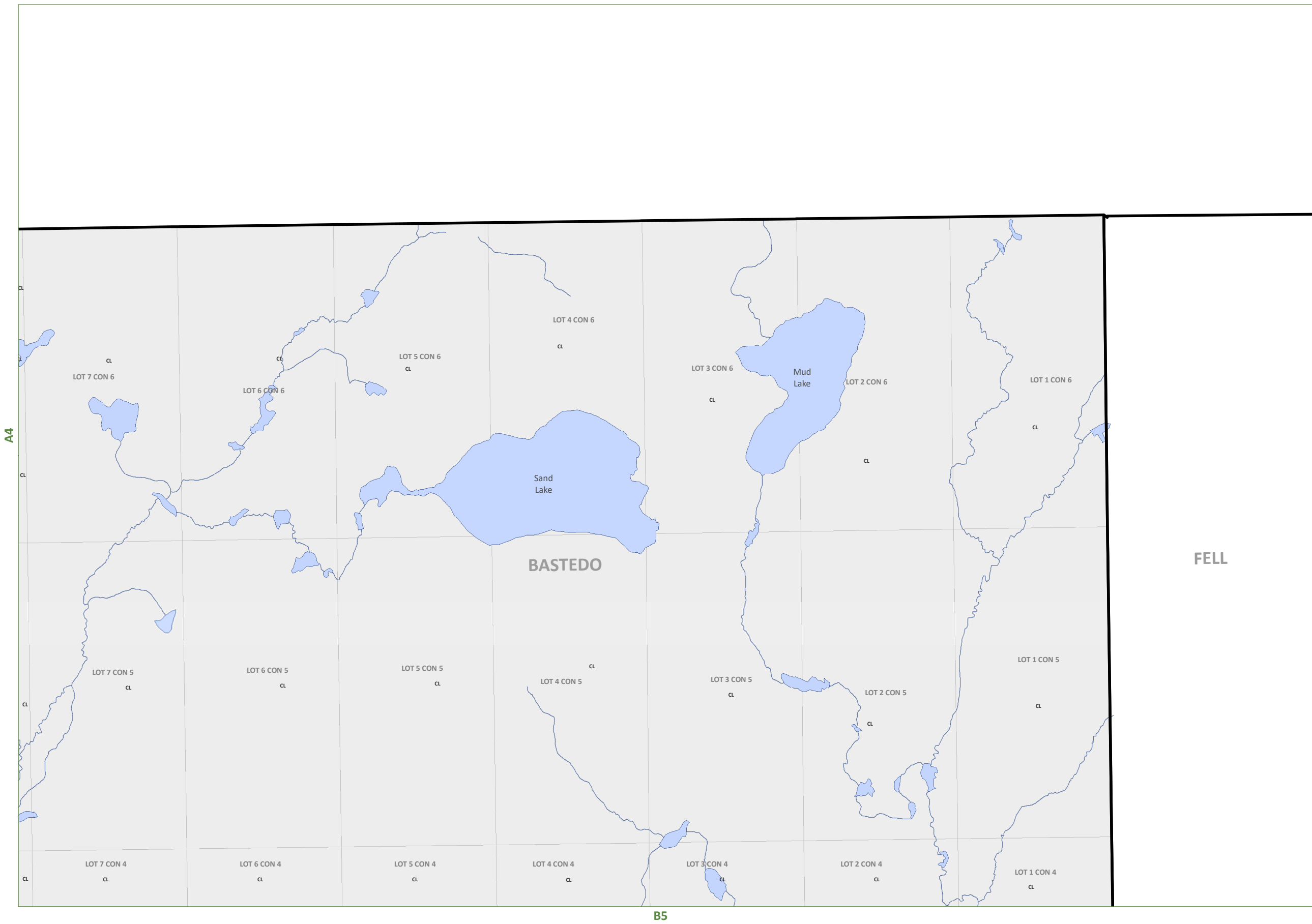


CONSOLIDATION





JUNE 1, 2018

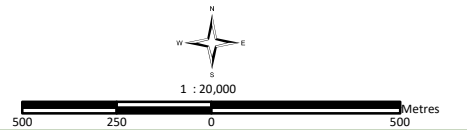
Schedule A5

BASTEDO/FELL



A1	Agriculture One	RU	Rural
A2	Agriculture Two		
R1	Residential One	R2	Residential Two
R3	Residential Three	R4	Residential Four
SR	Shoreline Residential		
RR	Rural Residential		
MHR	Mobile Home Residential		
C1	General Commercial	C2	Highway Commercial
C3	Tourist Commercial		
M1	Light Industrial	M2	Heavy Industrial
M3	Extractive Industrial		Waste Disposal Industrial
CL	Crown Land	OS	Open Space
CF	Community Facility		
PSW	Provincially Significant Wetland		

 Hazard Lands
 Waste Management Influence Area
 Settlement Areas
 Former Municipal Boundaries



This map is for illustration purposes only. The information displayed on this map has been created from Ministry of Natural Resources, Ontario Base Mapping & MPAC Property Fabric. While every effort has been made to accurately depict the information, this map should not be relied on as a precise indicator of locations of features or roads.

Base Mapping Source:
Ministry of Natural Resources - Ontario Base Mapping
MPAC - Municipal Property Assessment Corporation



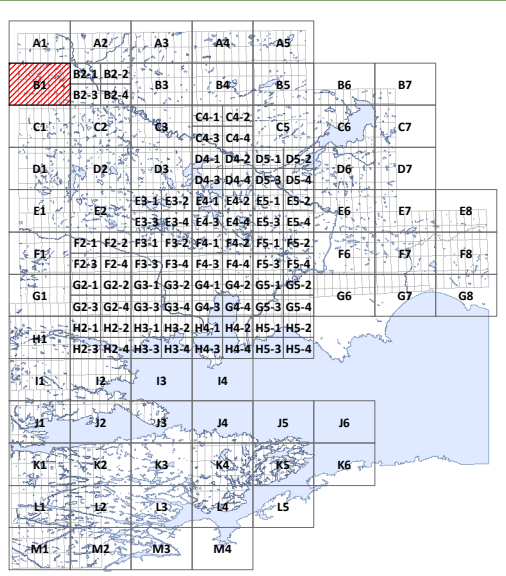
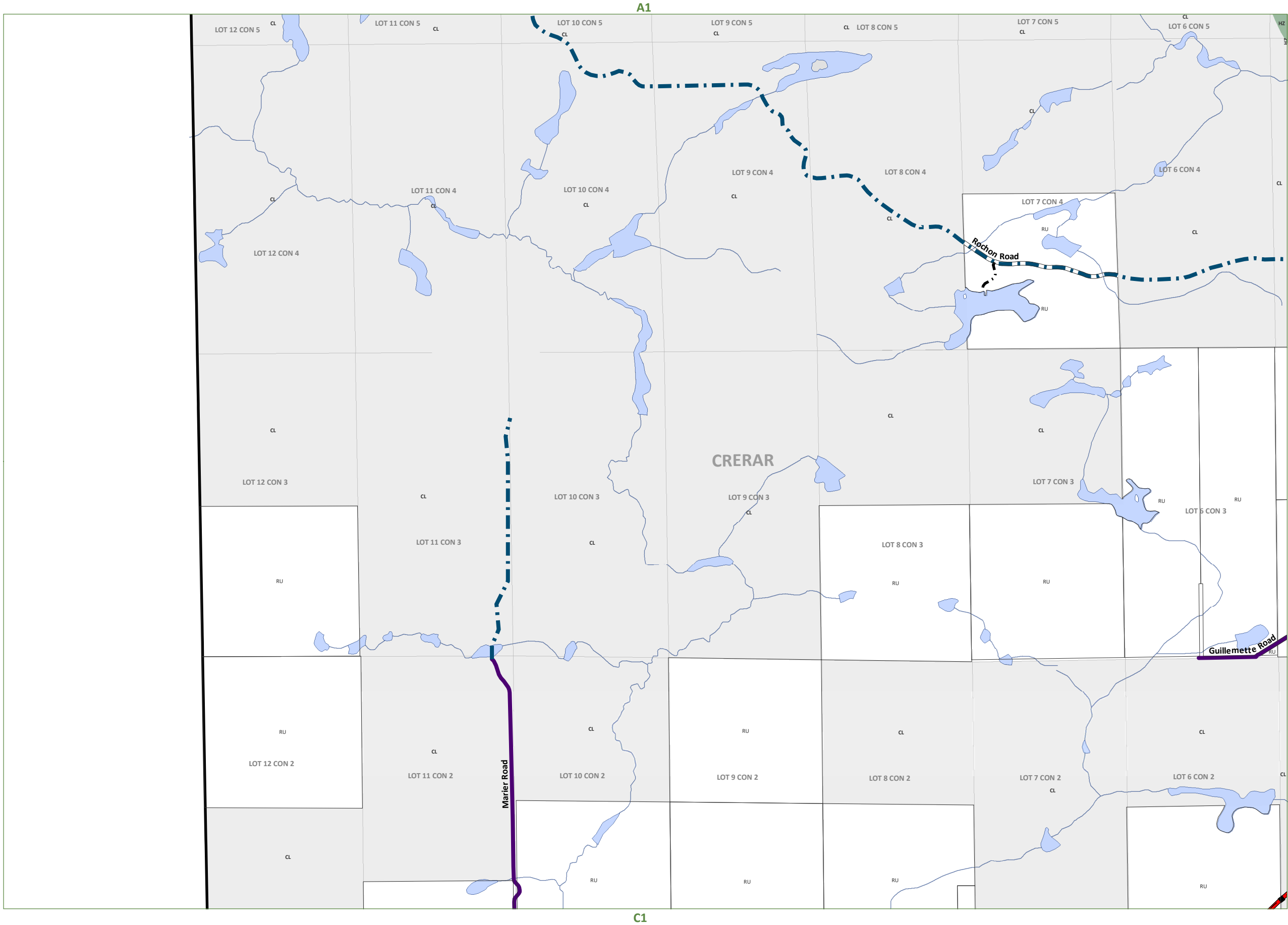
Adopted July 8, 2014



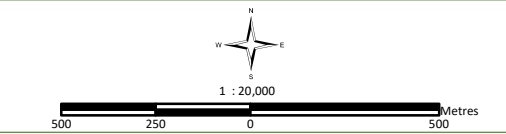
WEST NIPISSING OUEST
ZONING BY-LAW 2014-45

CONSOLIDATION
JUNE 1, 2018

Schedule B1
CRERAR



A1	Agriculture One	RU	Rural
A2	Agriculture Two		
R1	Residential One	R2	Residential Two
R3	Residential Three	R4	Residential Four
SR	Shoreline Residential		
RR	Rural Residential		
MHR	Mobile Home Residential		
C1	General Commercial	C2	Highway Commercial
C3	Tourist Commercial		
M1	Light Industrial	M2	Heavy Industrial
M3	Extractive Industrial		Waste Disposal Industrial
CL	Crown Land	OS	Open Space
CF	Community Facility		
PSW	Provincially Significant Wetland		
HZ	Hazard Lands		
	Waste Management Influence Area		
	Settlement Areas		
	Former Municipal Boundaries		
	Highways		Private Roads
	Township Roads		Resource Roads
	Pipeline		Rail Lines



This map is for illustration purposes only. The information displayed on this map has been created from Ministry of Natural Resources, Ontario Base Mapping & MPAC Property Fabrics. While every effort has been made to accurately depict the information, this map should not be relied on as a precise indicator of locations of features or roads.

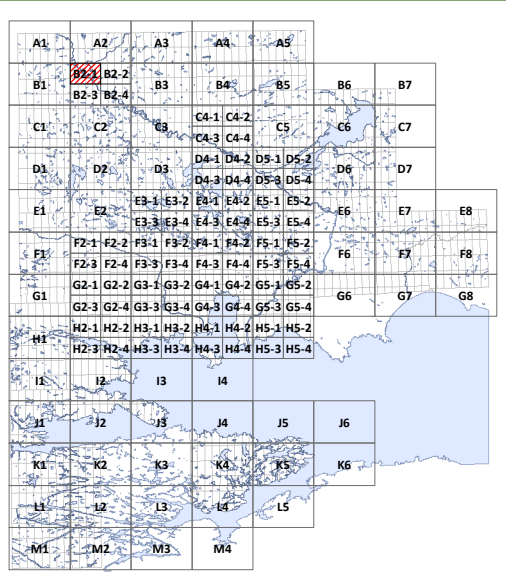
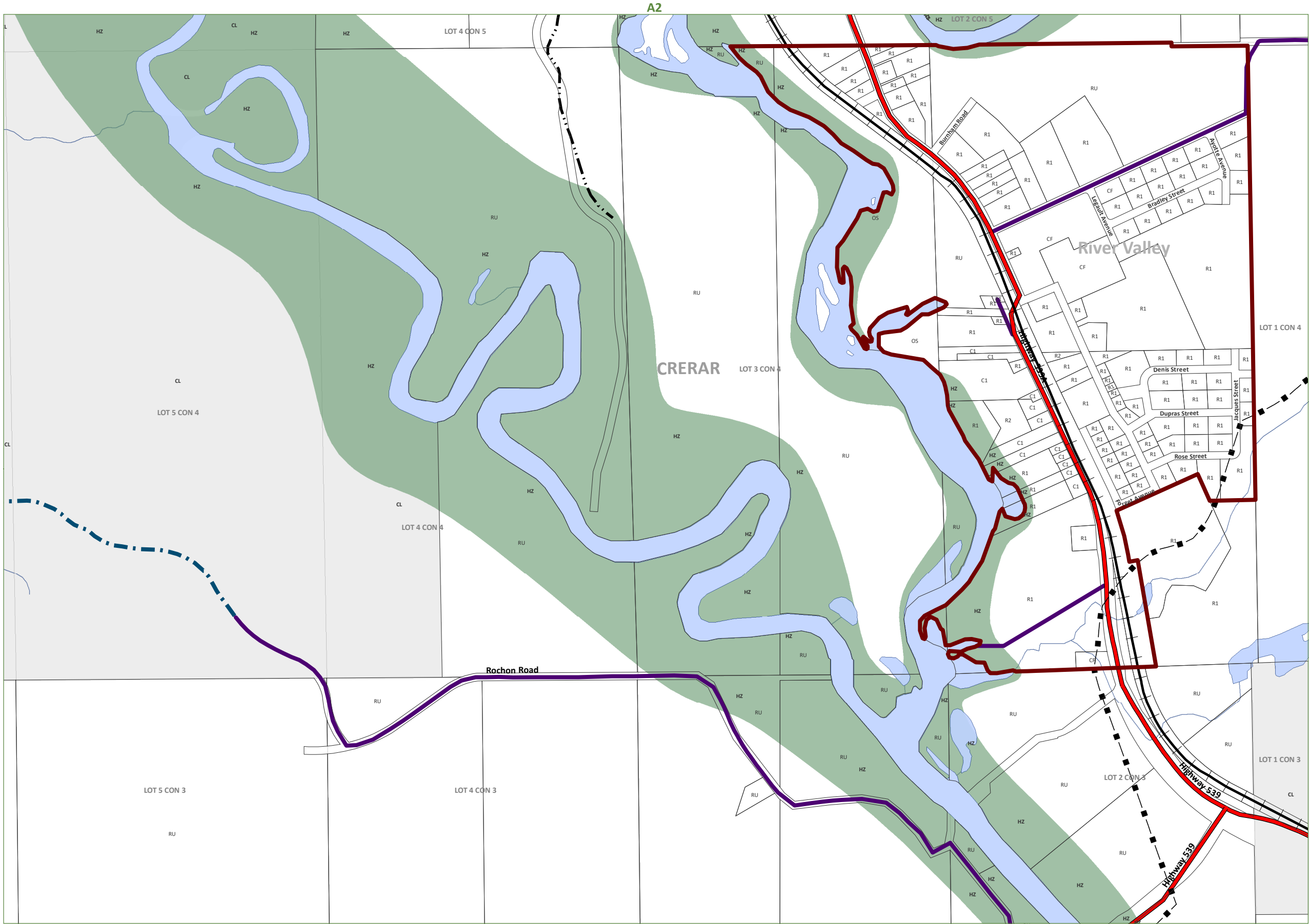
Base Mapping Source:
Ministry of Natural Resources - Ontario Base Mapping
MPAC - Municipal Property Assessment Corporation



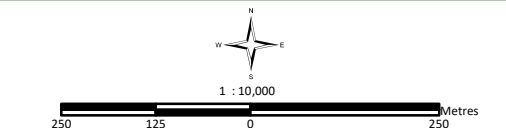
WEST NIPISSING OUEST
ZONING BY-LAW 2014-45

CONSOLIDATION
JUNE 1, 2018

Schedule B2-1
CRERAR



- | | |
|--------------------------------------|---------------------------|
| A1 Agriculture One | RU Rural |
| A2 Agriculture Two | |
| R1 Residential One | R2 Residential Two |
| R3 Residential Three | R4 Residential Four |
| SR Shoreline Residential | |
| RR Rural Residential | |
| MHR Mobile Home Residential | |
| C1 General Commercial | C2 Highway Commercial |
| C3 Tourist Commercial | |
| M1 Light Industrial | M2 Heavy Industrial |
| M3 Extractive Industrial | Waste Disposal Industrial |
| CL Crown Land | OS Open Space |
| CF Community Facility | |
| PSW Provincially Significant Wetland | |
| HZ Hazard Lands | |
| Waste Management Influence Area | |
| Settlement Areas | |
| Former Municipal Boundaries | |
| Highways | Private Roads |
| Township Roads | Resource Roads |
| Pipeline | Rail Lines |



This map is for illustration purposes only. The information displayed on this map has been created from Ministry of Natural Resources, Ontario Base Mapping & MPAC Property Fabrics. While every effort has been made to accurately depict the information, this map should not be relied on as a precise indicator of locations of features or roads.

Base Mapping Source:
Ministry of Natural Resources - Ontario Base Mapping
MPAC - Municipal Property Assessment Corporation

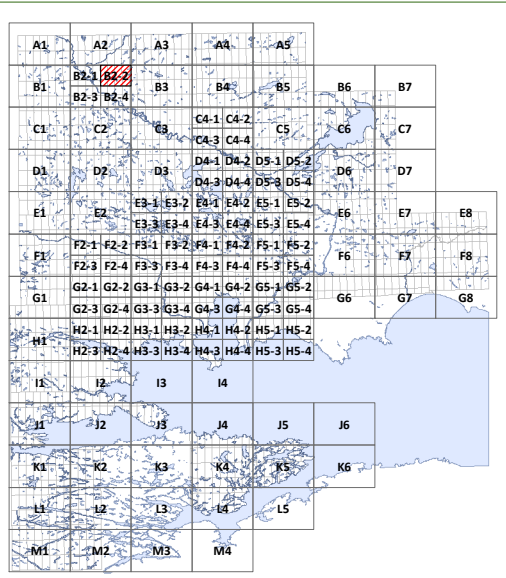
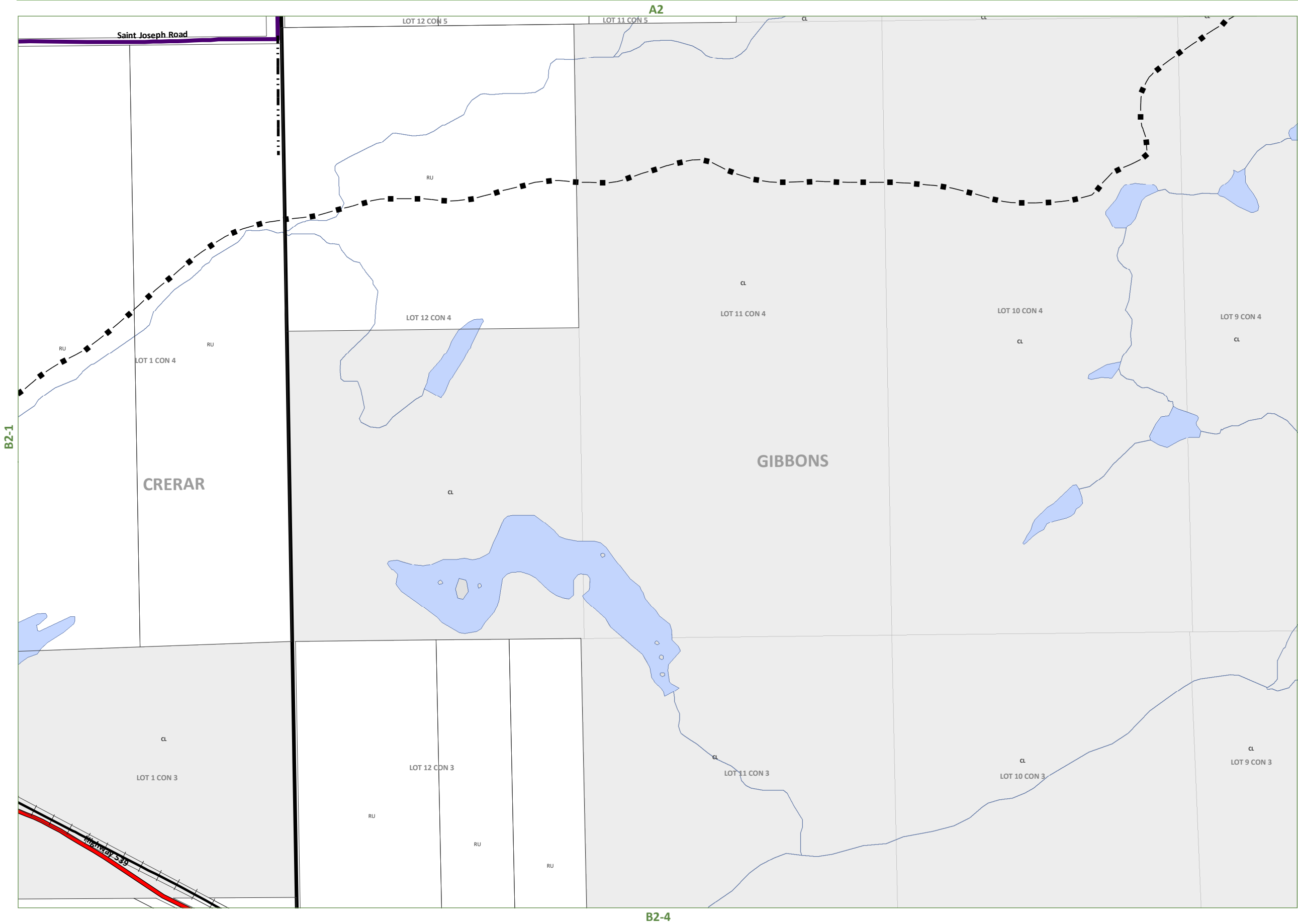


WEST NIPISSING OUEST ZONING BY-LAW 2014-45

CONSOLIDATION
JUNE 1, 2018

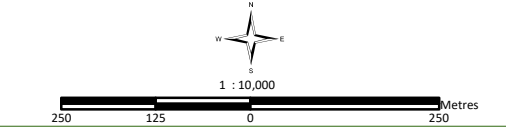
Schedule B2-2

CRERAR/GIBBONS



A1	Agriculture One	RU	Rural
A2	Agriculture Two		
R1	Residential One	R2	Residential Two
R3	Residential Three	R4	Residential Four
SR	Shoreline Residential		
RR	Rural Residential		
MHR	Mobile Home Residential		
C1	General Commercial	C2	Highway Commercial
C3	Tourist Commercial		
M1	Light Industrial	M2	Heavy Industrial
M3	Extractive Industrial		Waste Disposal Industrial
CL	Crown Land	OS	Open Space
CF	Community Facility		
PSW	Provincially Significant Wetland		

HZ	Hazard Lands
	Waste Management Influence Area
	Settlement Areas
	Former Municipal Boundaries
	Highways
	Township Roads
	Private Roads
	Resource Roads
	Pipeline
	Rail Lines



This map is for illustration purposes only. The information displayed on this map has been created from Ministry of Natural Resources, Ontario Base Mapping & MPAC Property Fabrics. While every effort has been made to accurately depict the information, this map should not be relied on as a precise indicator of locations of features or roads.

Base Mapping Source:
Ministry of Natural Resources - Ontario Base Mapping
MPAC - Municipal Property Assessment Corporation



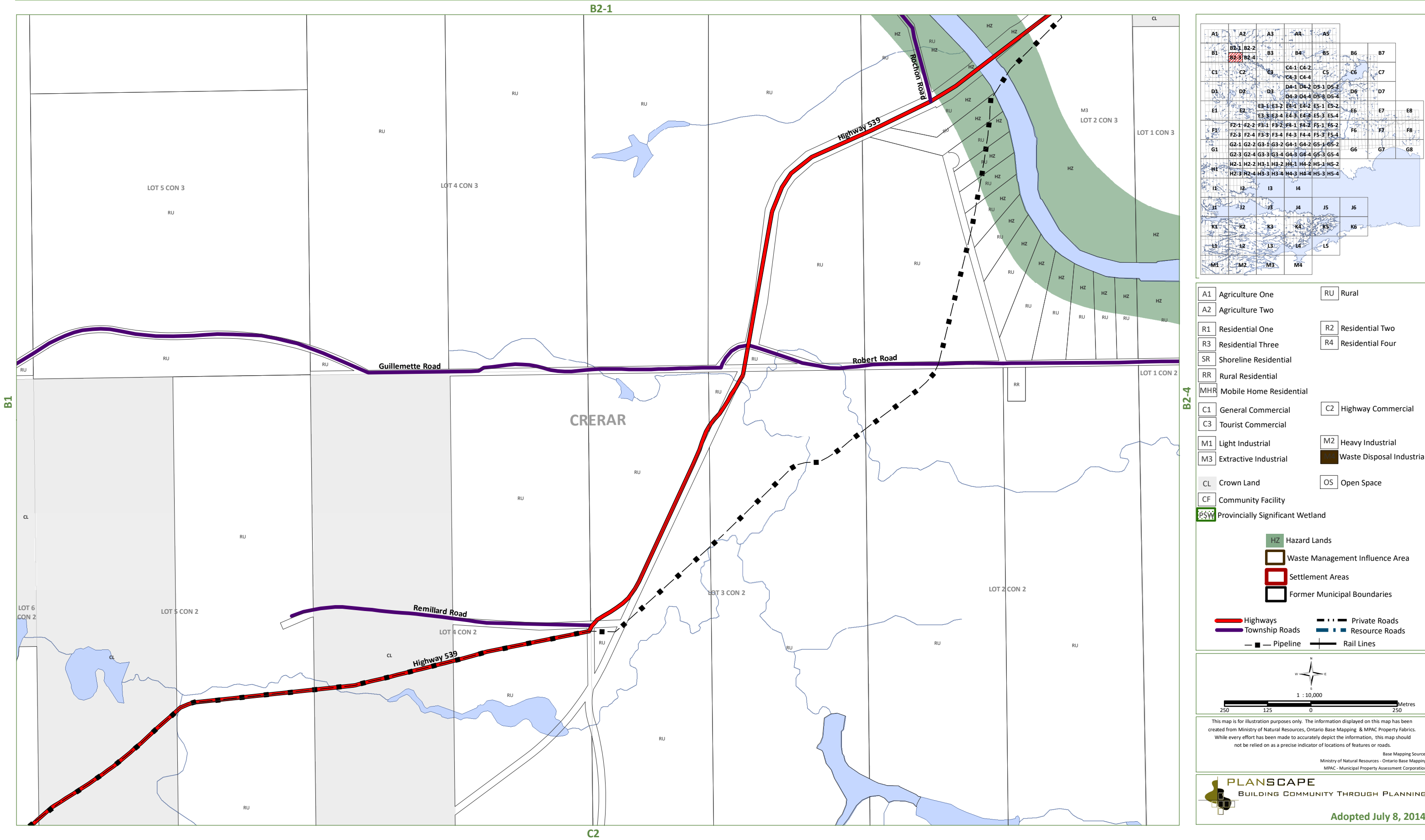
WEST NIPISSING OUEST

ZONING BY-LAW 2014-45

CONSOLIDATION
JUNE 1, 2018

Schedule B2-3

CRERAR





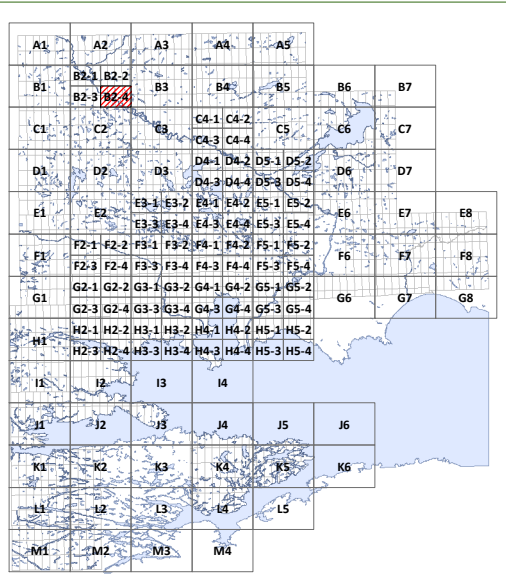
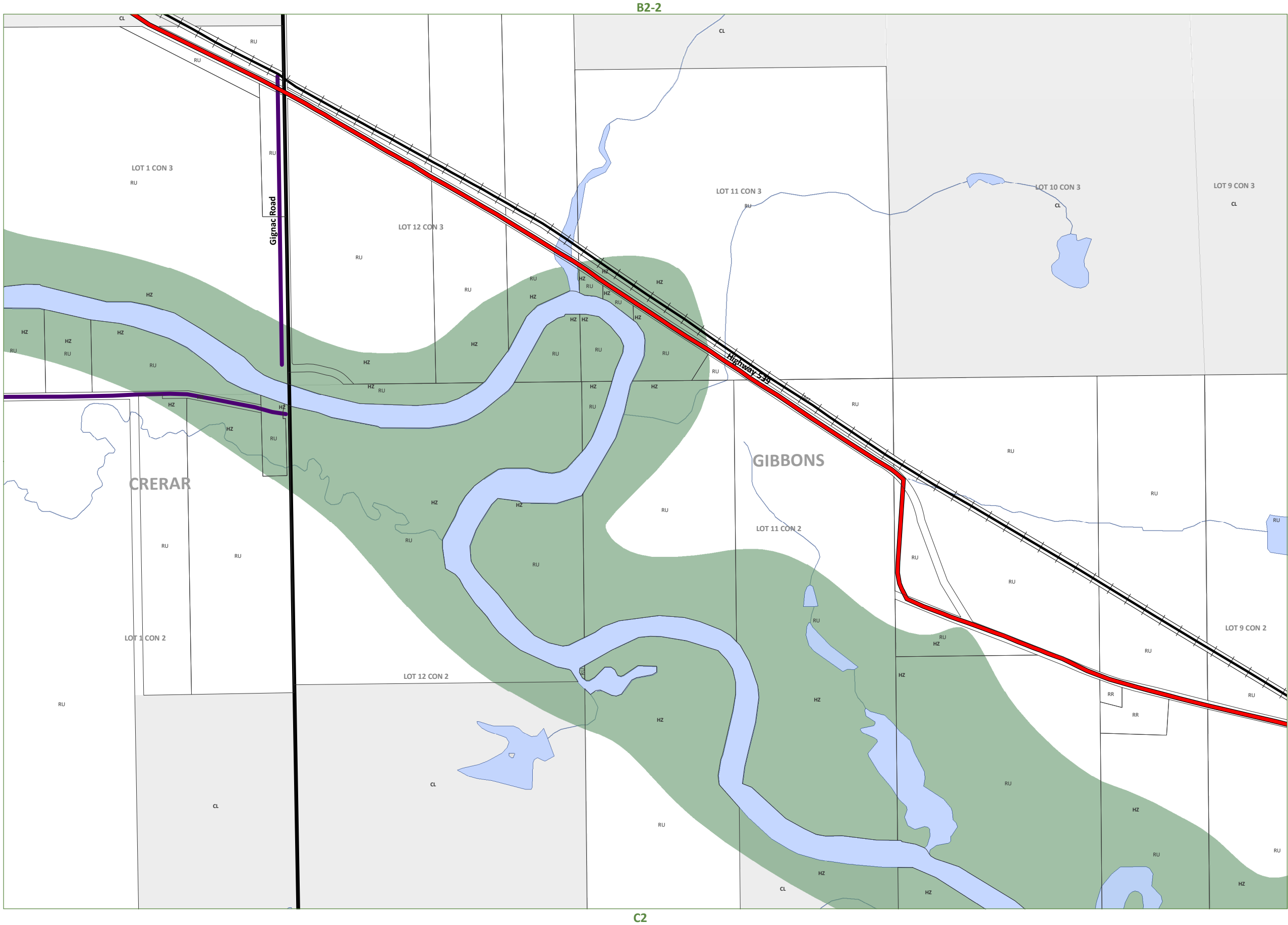
WEST NIPISSING OUEST

ZONING BY-LAW 2014-45

CONSOLIDATION
JUNE 1, 2018

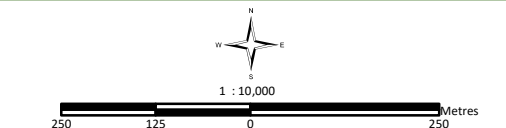
Schedule B2-4

CRERAR/GIBBONS



A1	Agriculture One	RU	Rural
A2	Agriculture Two		
R1	Residential One	R2	Residential Two
R3	Residential Three	R4	Residential Four
SR	Shoreline Residential		
RR	Rural Residential		
MHR	Mobile Home Residential		
C1	General Commercial	C2	Highway Commercial
C3	Tourist Commercial		
M1	Light Industrial	M2	Heavy Industrial
M3	Extractive Industrial		Waste Disposal Industrial
CL	Crown Land	OS	Open Space
CF	Community Facility		
PSW	Provincially Significant Wetland		

- HZ Hazard Lands
- Waste Management Influence Area
- Settlement Areas
- Former Municipal Boundaries
- Highways
- Township Roads
- Pipeline
- Private Roads
- Resource Roads
- Rail Lines



This map is for illustration purposes only. The information displayed on this map has been created from Ministry of Natural Resources, Ontario Base Mapping & MPAC Property Fabrics. While every effort has been made to accurately depict the information, this map should not be relied on as a precise indicator of locations of features or roads.

Base Mapping Source:
Ministry of Natural Resources - Ontario Base Mapping
MPAC - Municipal Property Assessment Corporation



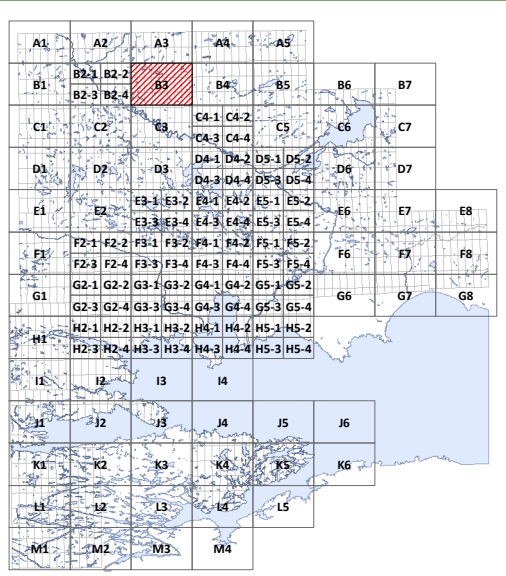
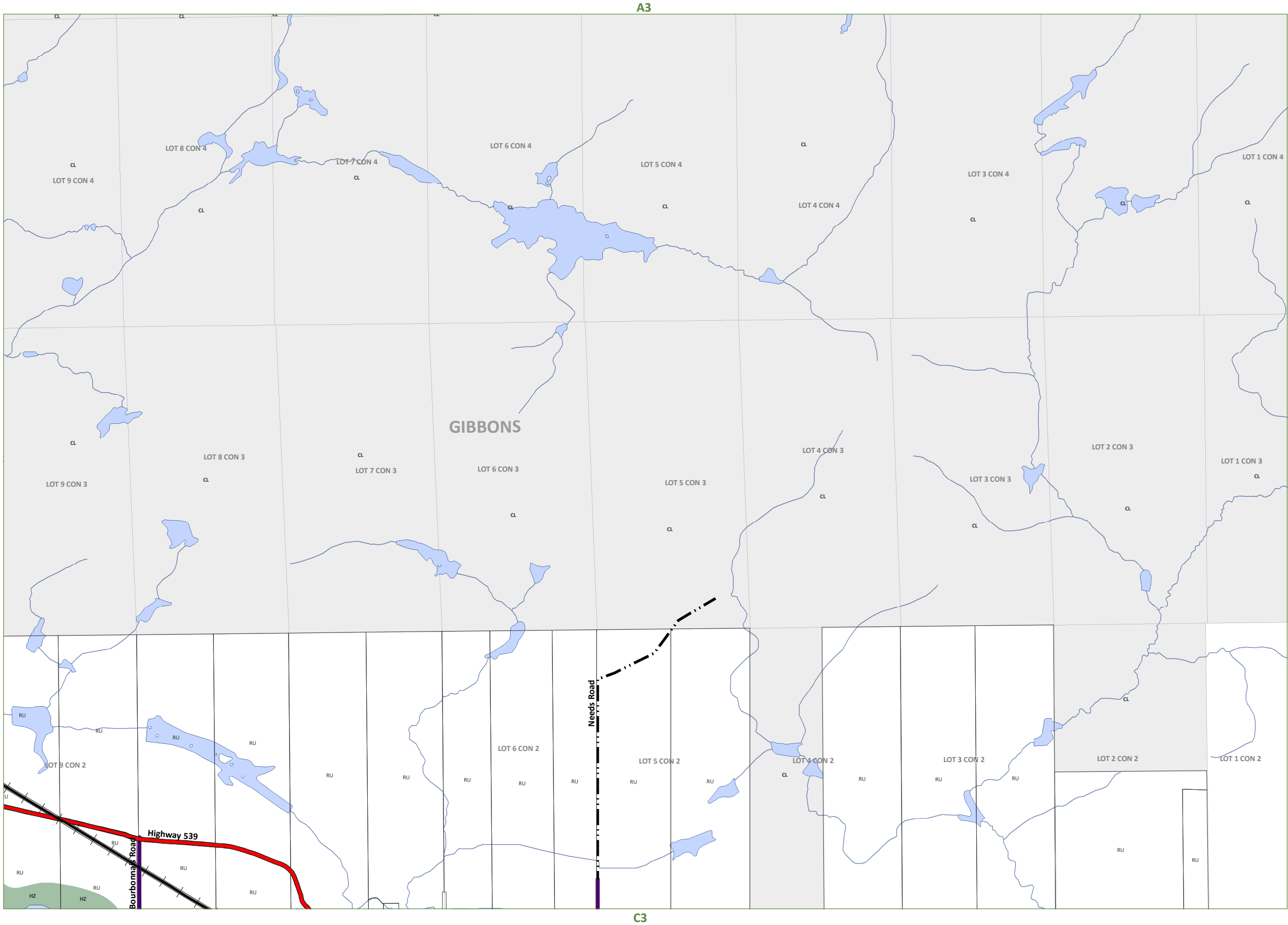
WEST NIPISSING OUEST

ZONING BY-LAW 2014-45

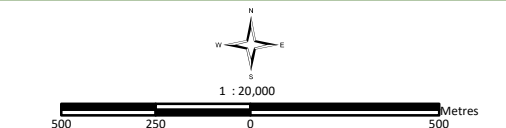
CONSOLIDATION
JUNE 1, 2018

Schedule B3

GIBBONS



A1	Agriculture One	RU	Rural
A2	Agriculture Two		
R1	Residential One	R2	Residential Two
R3	Residential Three	R4	Residential Four
SR	Shoreline Residential		
RR	Rural Residential		
MHR	Mobile Home Residential		
C1	General Commercial	C2	Highway Commercial
C3	Tourist Commercial		
M1	Light Industrial	M2	Heavy Industrial
M3	Extractive Industrial		Waste Disposal Industrial
CL	Crown Land	OS	Open Space
CF	Community Facility		
PSW	Provincially Significant Wetland		
HZ	Hazard Lands		
	Waste Management Influence Area		
	Settlement Areas		
	Former Municipal Boundaries		
	Highways		Private Roads
	Township Roads		Resource Roads
	Pipeline		Rail Lines



This map is for illustration purposes only. The information displayed on this map has been created from Ministry of Natural Resources, Ontario Base Mapping & MPAC Property Fabrics. While every effort has been made to accurately depict the information, this map should not be relied on as a precise indicator of locations of features or roads.

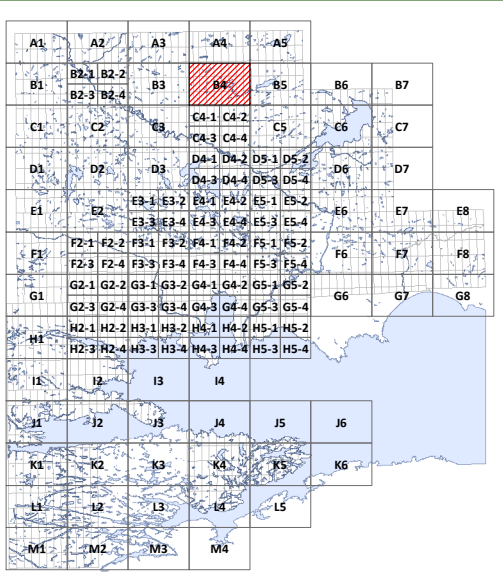
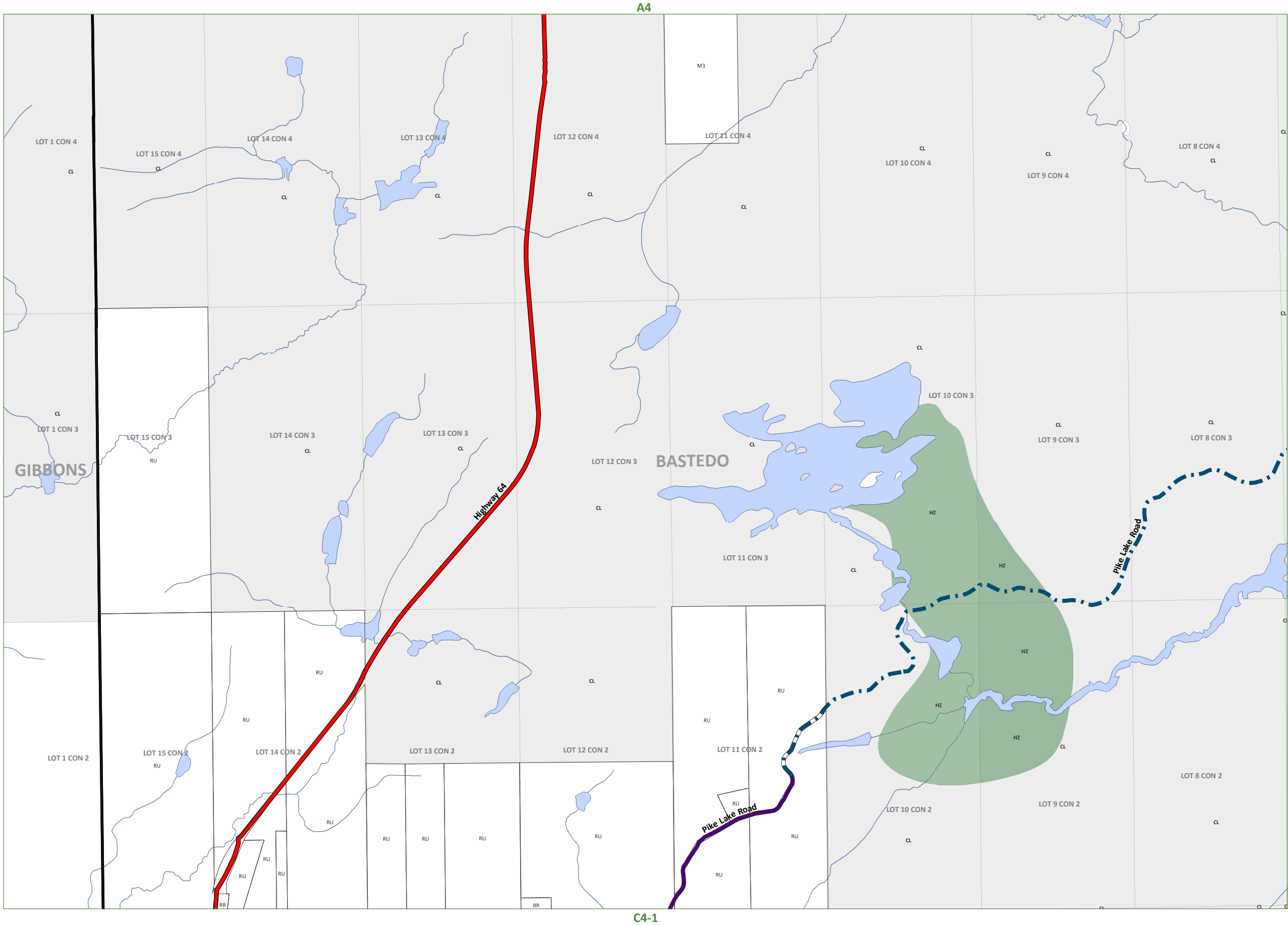
Base Mapping Source:
Ministry of Natural Resources - Ontario Base Mapping
MPAC - Municipal Property Assessment Corporation



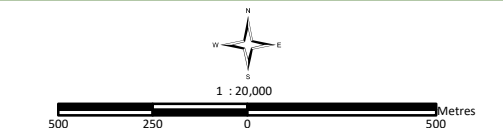
WEST NIPISSING OUEST ZONING BY-LAW 2014-45

CONSOLIDATION
JUNE 1, 2018

Schedule B4 GIBBONS/BASTEDO



A1	Agriculture One	RU	Rural
A2	Agriculture Two		
R1	Residential One	R2	Residential Two
R3	Residential Three	R4	Residential Four
SR	Shoreline Residential		
RR	Rural Residential		
MHR	Mobile Home Residential		
C1	General Commercial	C2	Highway Commercial
C3	Tourist Commercial		
M1	Light Industrial	M2	Heavy Industrial
M3	Extractive Industrial		Waste Disposal Industrial
CL	Crown Land	OS	Open Space
CF	Community Facility		
PSW	Provincially Significant Wetland		
HZ	Hazard Lands		
	Waste Management Influence Area		
	Settlement Areas		
	Former Municipal Boundaries		
	Highways		Private Roads
	Township Roads		Resource Roads
	Pipeline		Rail Lines



This map is for illustration purposes only. The information displayed on this map has been created from Ministry of Natural Resources, Ontario Base Mapping & MPAC Property Fabrics. While every effort has been made to accurately depict the information, this map should not be relied on as a precise indicator of locations of features or roads.

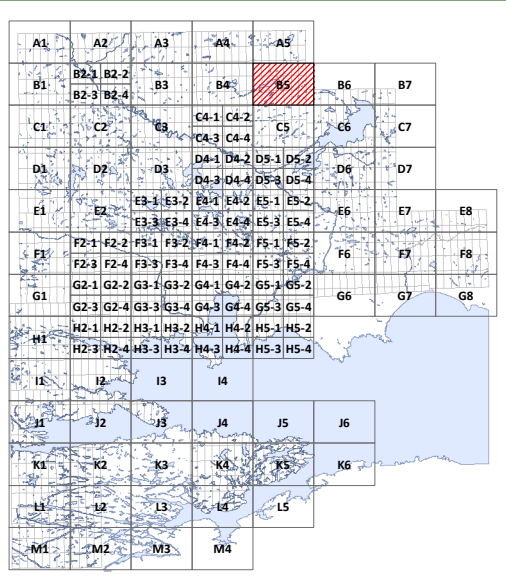
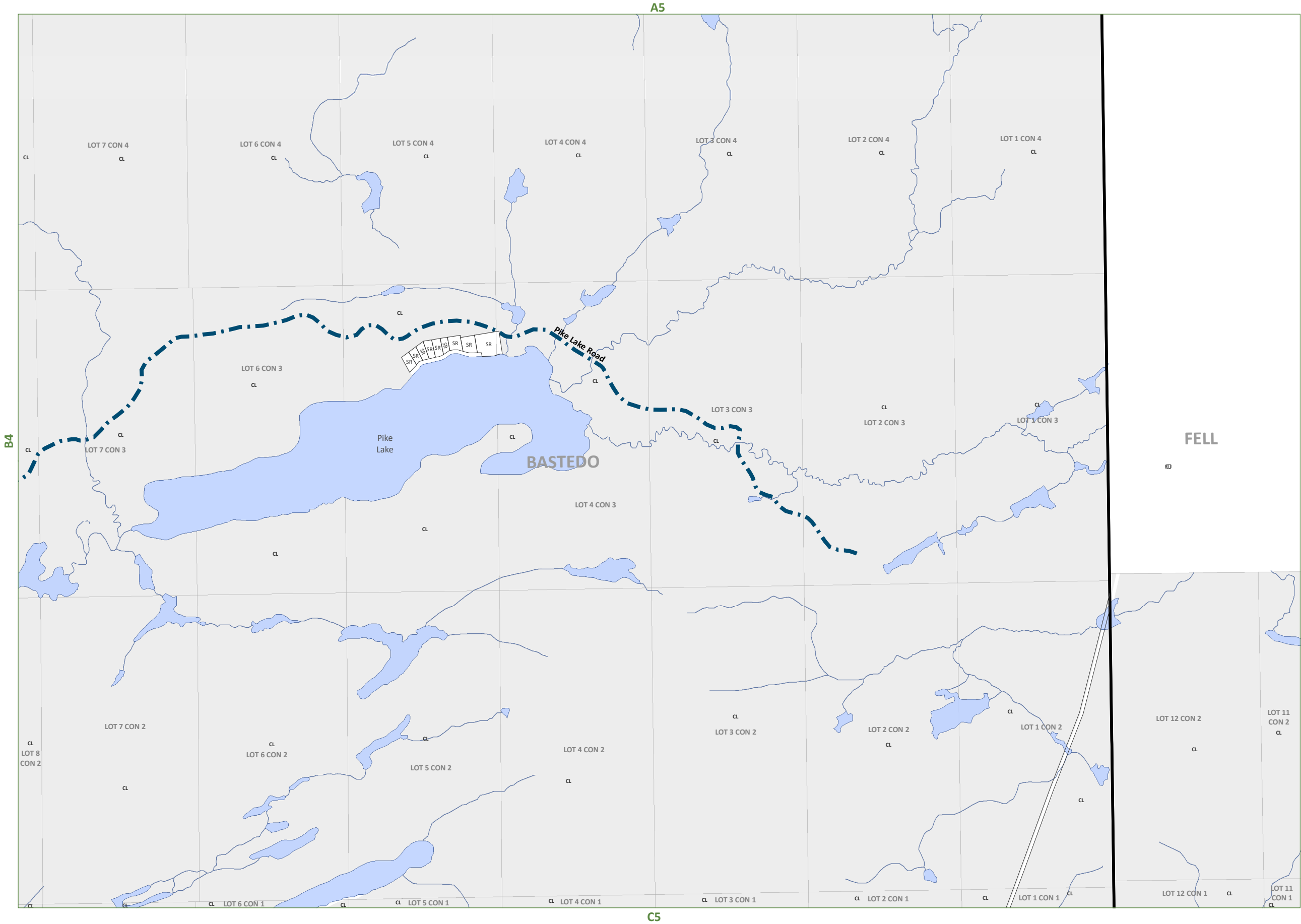
Base Mapping Source:
Ministry of Natural Resources - Ontario Base Mapping
MPAC - Municipal Property Assessment Corporation



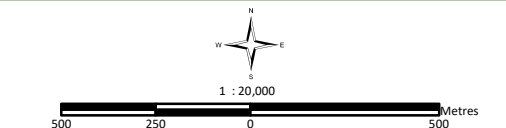
WEST NIPISSING OUEST
ZONING BY-LAW 2014-45

CONSOLIDATION
JUNE 1, 2018

Schedule B5
BASTEDO/FELL



A1	Agriculture One	RU	Rural
A2	Agriculture Two		
R1	Residential One	R2	Residential Two
R3	Residential Three	R4	Residential Four
SR	Shoreline Residential		
RR	Rural Residential		
MHR	Mobile Home Residential		
C1	General Commercial	C2	Highway Commercial
C3	Tourist Commercial		
M1	Light Industrial	M2	Heavy Industrial
M3	Extractive Industrial		Waste Disposal Industrial
CL	Crown Land	OS	Open Space
CF	Community Facility		
PSW	Provincially Significant Wetland		
HZ	Hazard Lands		
	Waste Management Influence Area		
	Settlement Areas		
	Former Municipal Boundaries		
	Highways		Private Roads
	Township Roads		Resource Roads
	Pipeline		Rail Lines



This map is for illustration purposes only. The information displayed on this map has been created from Ministry of Natural Resources, Ontario Base Mapping & MPAC Property Fabrics. While every effort has been made to accurately depict the information, this map should not be relied on as a precise indicator of locations of features or roads.

Base Mapping Source:
Ministry of Natural Resources - Ontario Base Mapping
MPAC - Municipal Property Assessment Corporation

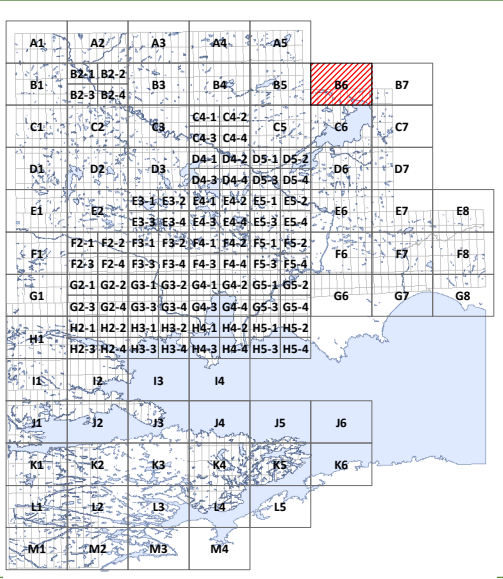


CONSOLIDATION











JUNE 1, 2018

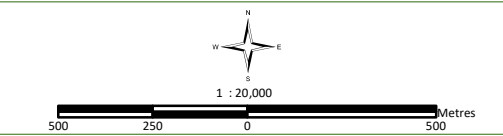
Schedule B6

FELL



A1	Agriculture One	RU	Rural
A2	Agriculture Two		
R1	Residential One	R2	Residential Two
R3	Residential Three	R4	Residential Four
SR	Shoreline Residential		
RR	Rural Residential		
MHR	Mobile Home Residential		
C1	General Commercial	C2	Highway Commercial
C3	Tourist Commercial		
M1	Light Industrial	M2	Heavy Industrial
M3	Extractive Industrial		Waste Disposal Industrial
CL	Crown Land	OS	Open Space
CF	Community Facility		
PSW	Provincially Significant Wetland		

 Hazard Lands
 Waste Management Influence Area
 Settlement Areas
 Former Municipal Boundaries
 Highways
 Township Roads
 Private Roads
 Resource Roads
 Pipeline
 Rail Lines



This map is for illustration purposes only. The information displayed on this map has been created from Ministry of Natural Resources, Ontario Base Mapping & MPAC Property Fabrics. While every effort has been made to accurately depict the information, this map should not be relied on as a precise indicator of locations of features or roads.

Base Mapping Source:
Ministry of Natural Resources - Ontario Base Mapping
MPAC - Municipal Property Assessment Corporation





WEST NIPISSING OUEST
ZONING BY-LAW 2014-45

CONSOLIDATION
JUNE 1, 2018

Schedule B7

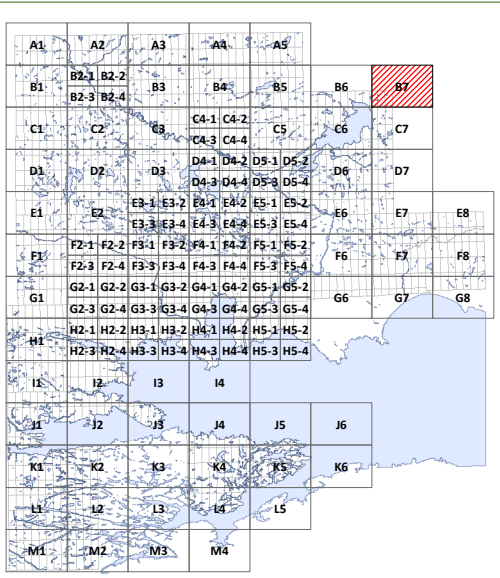
FELL

B6

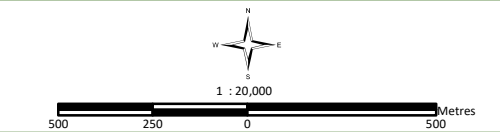
FELL



C7

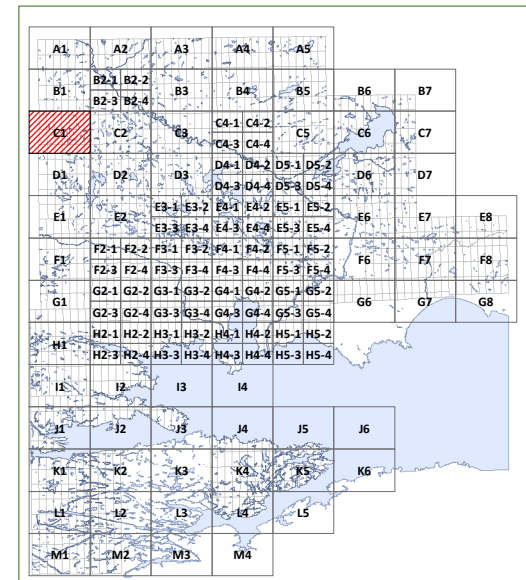
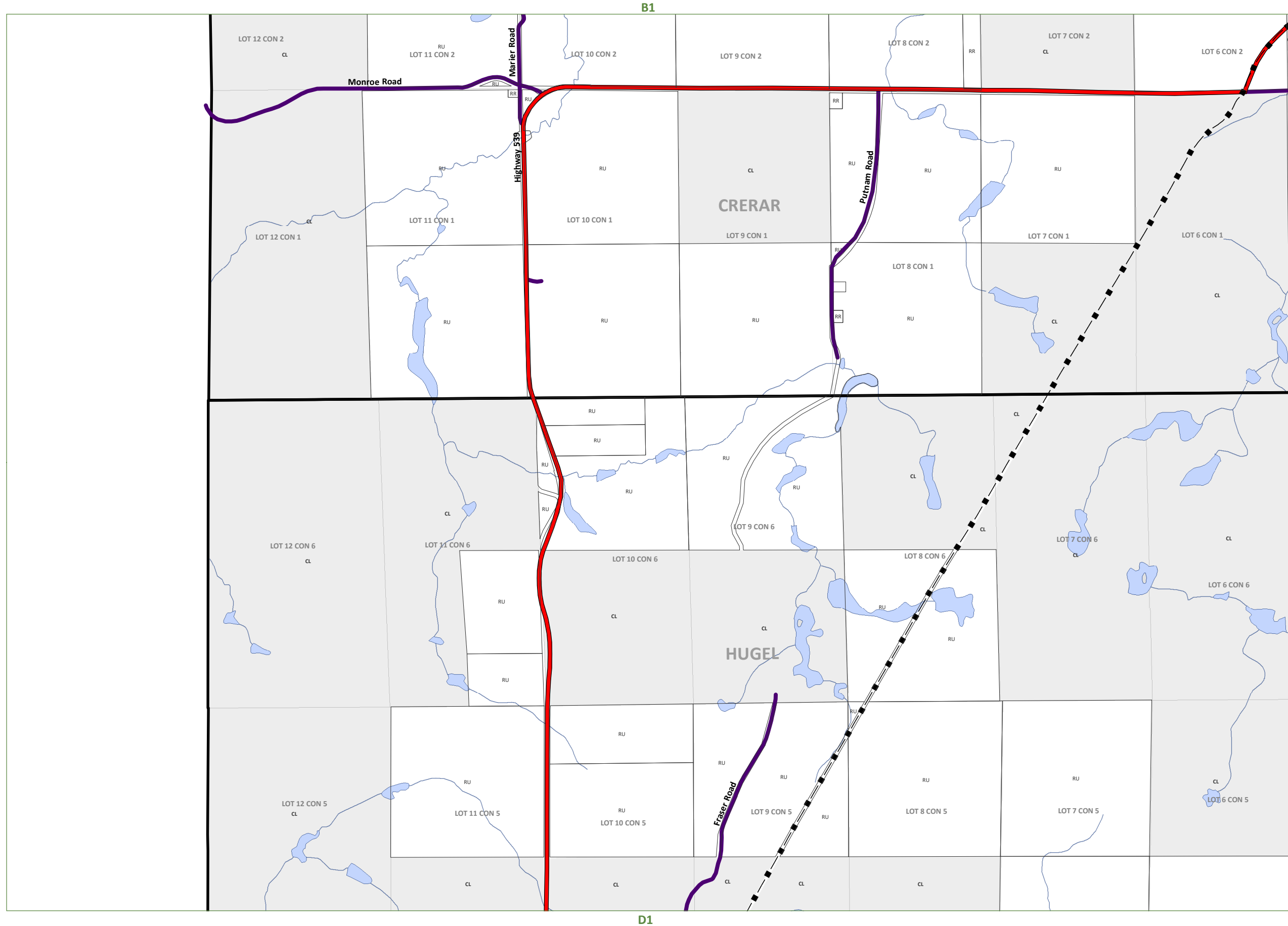


A1	Agriculture One	RU	Rural
A2	Agriculture Two		
R1	Residential One	R2	Residential Two
R3	Residential Three	R4	Residential Four
SR	Shoreline Residential		
RR	Rural Residential		
MHR	Mobile Home Residential		
C1	General Commercial	C2	Highway Commercial
C3	Tourist Commercial		
M1	Light Industrial	M2	Heavy Industrial
M3	Extractive Industrial		Waste Disposal Industrial
CL	Crown Land	OS	Open Space
CF	Community Facility		
PSW	Provincially Significant Wetland		
HZ	Hazard Lands		
	Waste Management Influence Area		
	Settlement Areas		
	Former Municipal Boundaries		
	Highways		Private Roads
	Township Roads		Resource Roads
	Pipeline		Rail Lines

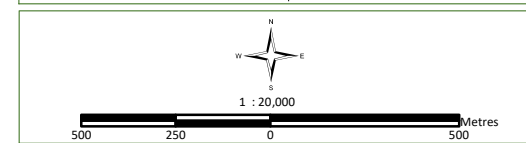


This map is for illustration purposes only. The information displayed on this map has been created from Ministry of Natural Resources, Ontario Base Mapping & MPAC Property Fabrics. While every effort has been made to accurately depict the information, this map should not be relied on as a precise indicator of locations of features or roads.

Base Mapping Source:
Ministry of Natural Resources - Ontario Base Mapping
MPAC - Municipal Property Assessment Corporation



A1	Agriculture One	RU	Rural
A2	Agriculture Two		
R1	Residential One	R2	Residential Two
R3	Residential Three	R4	Residential Four
SR	Shoreline Residential		
RR	Rural Residential		
MHR	Mobile Home Residential		
C1	General Commercial	C2	Highway Commercial
C3	Tourist Commercial		
M1	Light Industrial	M2	Heavy Industrial
M3	Extractive Industrial		Waste Disposal Industrial
CL	Crown Land	OS	Open Space
CF	Community Facility		
PSW	Provincially Significant Wetland		
HZ	Hazard Lands		
	Waste Management Influence Area		
	Settlement Areas		
	Former Municipal Boundaries		
	Highways		Private Roads
	Township Roads		Resource Roads
	Pipeline		Rail Lines



This map is for illustration purposes only. The information displayed on this map has been created from Ministry of Natural Resources, Ontario Base Mapping & MPAC Property Fabrics. While every effort has been made to accurately depict the information, this map should not be relied on as a precise indicator of locations of features or roads.

Base Mapping Source:
Ministry of Natural Resources - Ontario Base Mapping
MPAC - Municipal Property Assessment Corporation



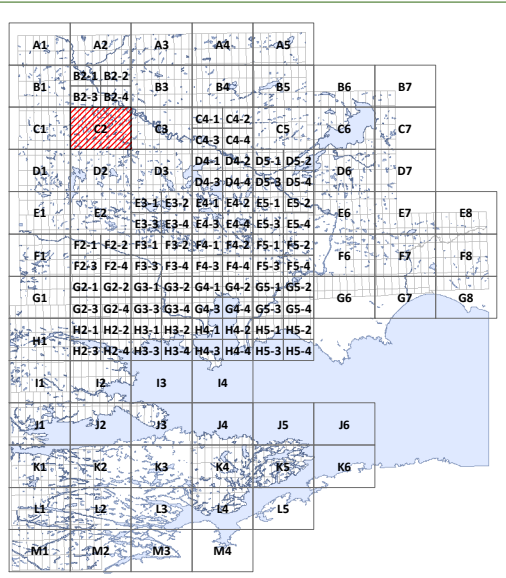
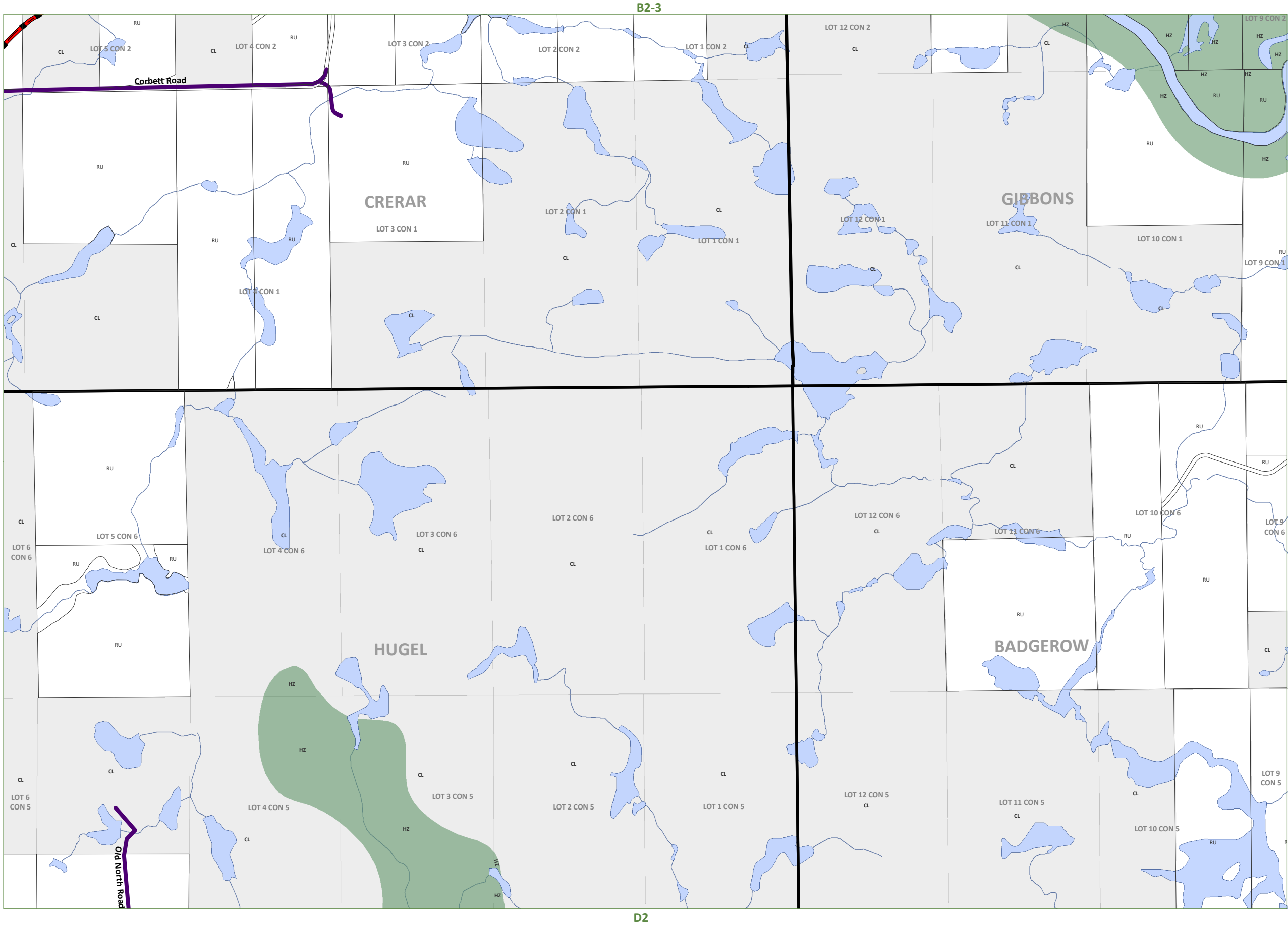
WEST NIPISSING OUEST

ZONING BY-LAW 2014-45

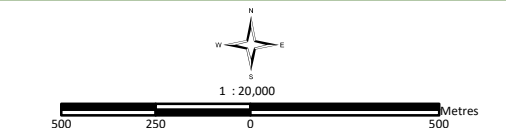
CONSOLIDATION
JUNE 1, 2018

Schedule C2

CRERAR/GIBBONS/HUGEL/BADGEROW



A1	Agriculture One	RU	Rural
A2	Agriculture Two		
R1	Residential One	R2	Residential Two
R3	Residential Three	R4	Residential Four
SR	Shoreline Residential		
RR	Rural Residential		
MHR	Mobile Home Residential		
C1	General Commercial	C2	Highway Commercial
C3	Tourist Commercial		
M1	Light Industrial	M2	Heavy Industrial
M3	Extractive Industrial		Waste Disposal Industrial
CL	Crown Land	OS	Open Space
CF	Community Facility		
PSW	Provincially Significant Wetland		
HZ	Hazard Lands		
	Waste Management Influence Area		
	Settlement Areas		
	Former Municipal Boundaries		
	Highways		Private Roads
	Township Roads		Resource Roads
	Pipeline		Rail Lines



This map is for illustration purposes only. The information displayed on this map has been created from Ministry of Natural Resources, Ontario Base Mapping & MPAC Property Fabrics. While every effort has been made to accurately depict the information, this map should not be relied on as a precise indicator of locations of features or roads.

Base Mapping Source:
Ministry of Natural Resources - Ontario Base Mapping
MPAC - Municipal Property Assessment Corporation



CONSOLIDATION

JUNE 1, 2018

Schedule C3

GIBBONS/BADGEROW

