

11618

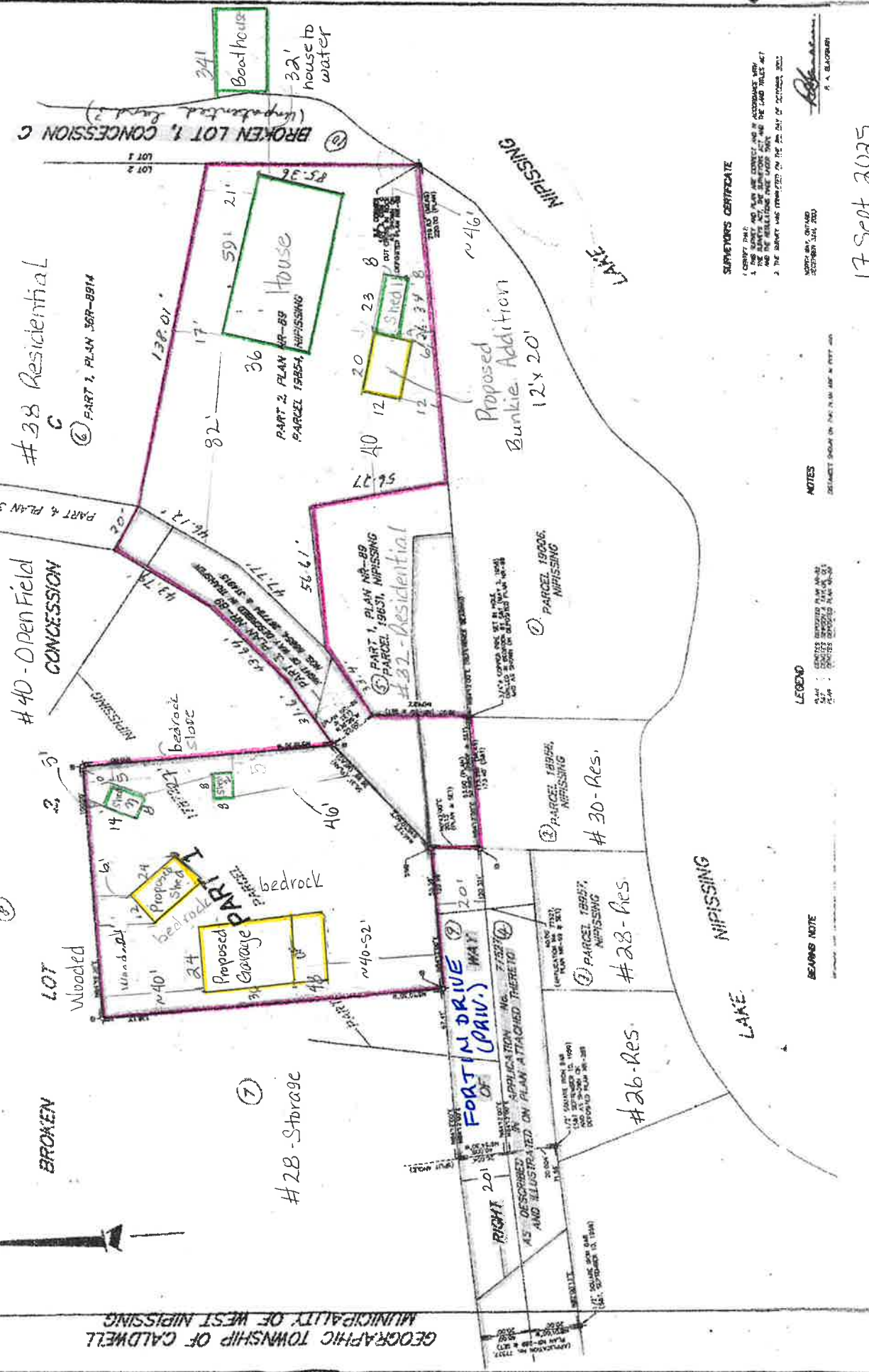
11618

PLAN 389-11618
 RECORDED AND DEPOSITED
 DATE: JAN 27 2004
 P.A. BLACKBURN
 SURVEYOR

PART	LOCATION	PARCEL	ACRES
1	PART OF BROKEN LOT 2 CONFESSION C	(PART OF PARCEL 1349 0.4)	

PLAN OF SURVEY OF
 PART OF BROKEN LOT 2, CONFESSION C
 GEOGRAPHIC TOWNSHIP OF CALDWELL
 MUNICIPALITY OF WEST NIPISSING
 DISTRICT OF NIPISSING

SCALE: 1 INCH = 20 FEET
 P.A. BLACKBURN, O.L.S.



SURVEYOR'S CERTIFICATE

I CERTIFY THAT:
 1. THE SURVEY AND PLAN ARE CORRECT AND IN ACCORDANCE WITH THE SURVEY ACT AND THE LAND TRACES ACT AND THE REGULATIONS MADE THEREUNDER.
 2. THE SURVEY WAS COMPLETED ON THE 27th DAY OF OCTOBER, 2003.

PA. BLACKBURN
 SURVEYOR

NOTES

DETAILS SHOWN ON THIS PLAN ARE IN FEET AND INCHES.

LEGEND

1. LOT BOUNDARIES
 2. CONFESSION BOUNDARIES
 3. CONFESSION PARCELS

BEARINGS NOTE

17 Sept 2025

