

PROPOSED SEVERANCE - PLAN VIEW, SCALE 1:2,000

LEGAL DESCRIPTION

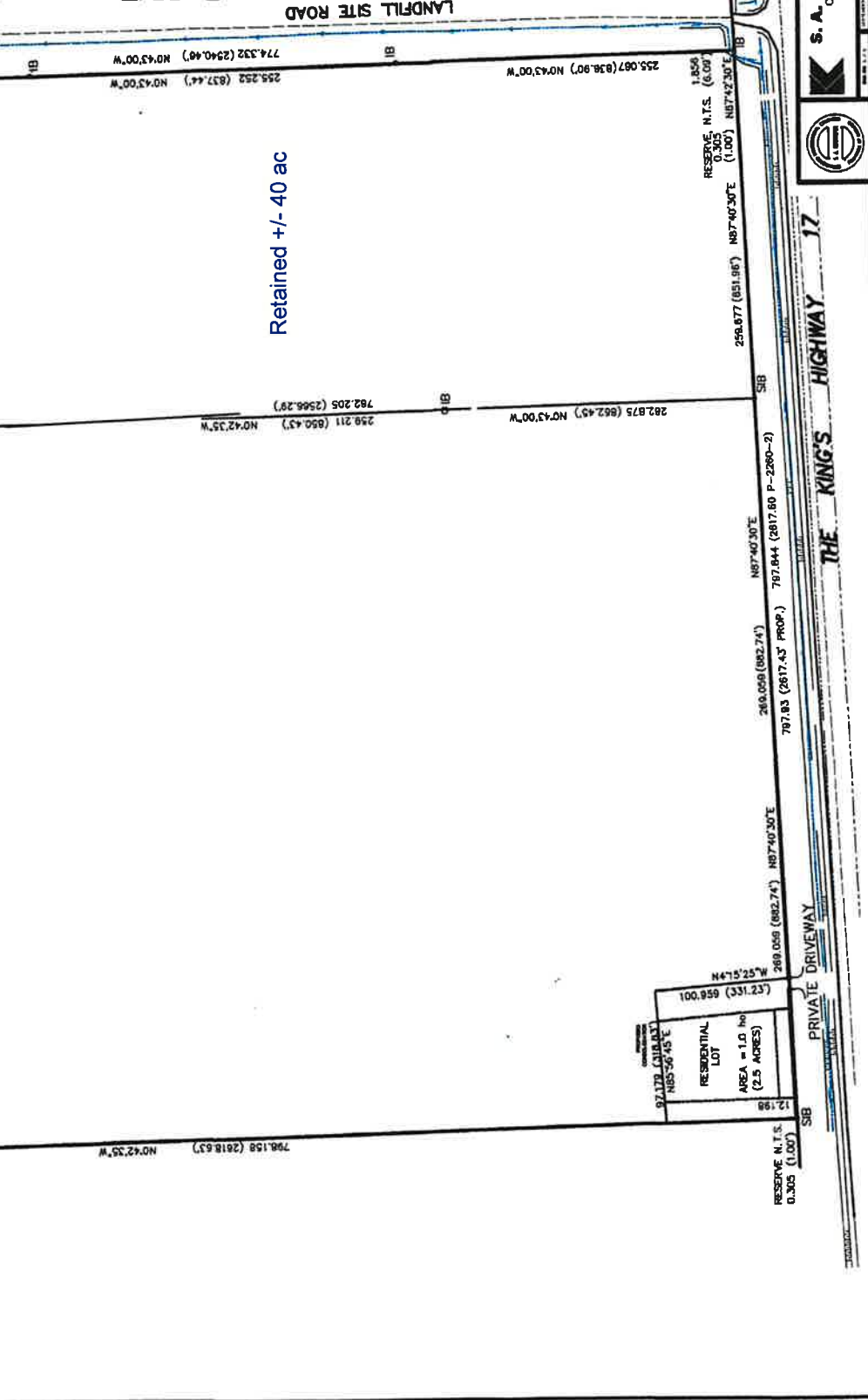
PLAN 36R-11543
 PART OF LOT 9, CONCESSION 1
 GEOGRAPHIC TOWNSHIP OF PEDLEY
 MUNICIPALITY OF WEST NIPISSING
 DISTRICT OF NIPISSING

OWNER: STURGEON FALLS BRUSH & CONTRACTING





LEGAL DESCRIPTION
 PLAN 36R-11543
 PART OF LOT 9, CONCESSION 1
 GEOGRAPHIC TOWNSHIP OF PEDLEY
 MUNICIPALITY OF WEST NIPISSING
 DISTRICT OF NIPISSING



S. A. Kirchefer Limited
 Consulting Engineer and Planner
 1100 Highway 73, Sturgeon Falls, Ontario